

About us

RELOC is an Italian company skilled in designing cutting-edge ICT solutions.

We support our customers by building complete solutions, tailored on specific needs, providing:

- > Analysis and technology scouting for development of new products
- > Design of embedded hardware, based on a wide range of technologies (microcontroller, FPGA, DSP, etc.)
- > Development of embedded firmware based on either simple scheduler or multi-thread RTOS
- > Focus on wireless connectivity, for industrial and consumer IoT fields, based on any radio protocol required (BLE, ZigBee, Wi-Fi, Thread, 6LoWPAN, ISM 433-868 MHz, 3G, LoRa, SigFox, etc.)
- > Integration with several Cloud services, to collect and process gathered data
- > Development of software and mobile applications based on cross-platform technologies
- > Support for test plan definition and certification process.

Please do not hesitate to contact us for further details at info@reloc.it.



BUILDING A CONNECTED WORLD. TODAY.



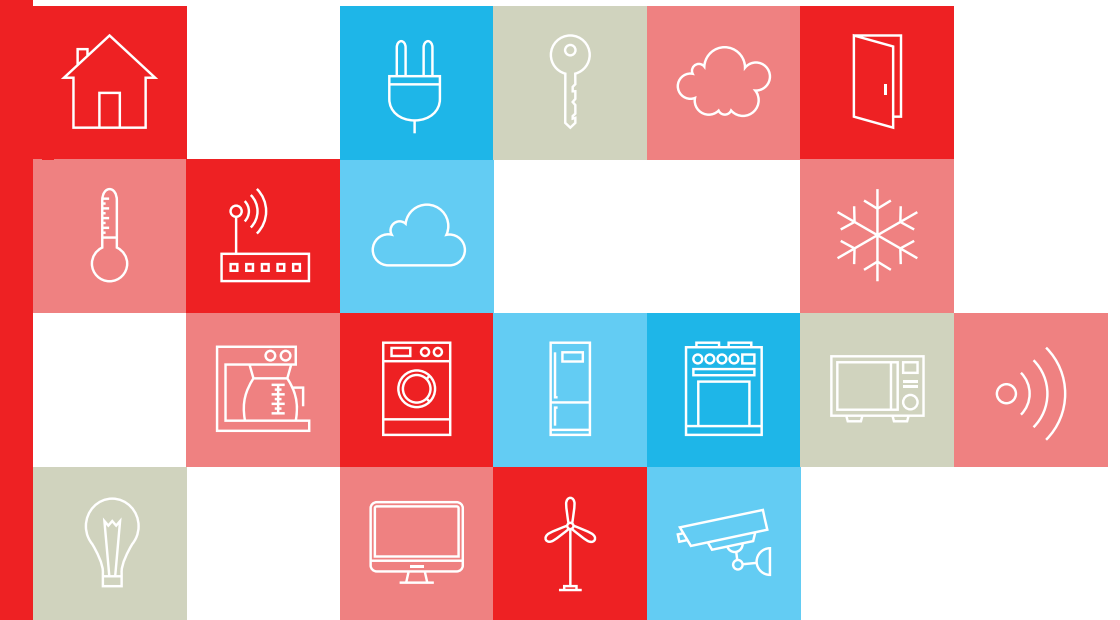
YOUR PARTNER FOR Embedded Design & Internet-of-Things Solutions



www.reloc.it
info@reloc.it

facebook.com/relocsr1
linkedin.com/company/reloc

Strada Langhirano 264/3A
43124 Parma
(Italy)
T +39 0521 649116

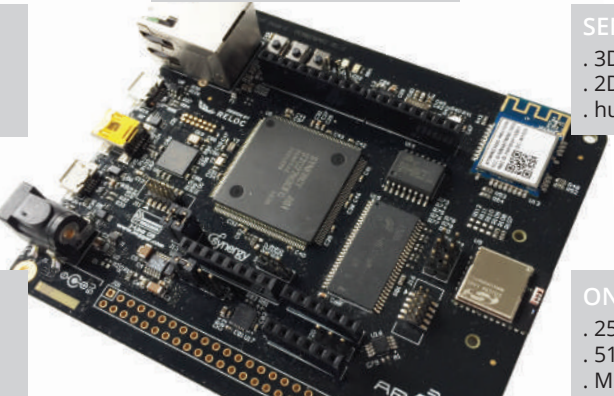


SYNERGY PLATFORM

ARIS Internet-of-Things boards

RELOC has developed the ARIS boards, a line of ready to use Internet-of-Things (IoT) hardware and software solutions that enables users to get their IoT applications up and running quickly.

Leveraging on Renesas Synergy development platform, ARIS boards accelerate IoT designs by making it easier and quicker to start development with a fully qualified and optimized combination of hardware and software that encourages innovation and product differentiation.



RENEAS SYNERGY S7

- . ARM Cortex-M4 w/ FPU
- . Up to 240 MHz CPU core
- . 4 MB Flash / 640 kB RAM
- . On-board J-Link debugger

WIRED CONNECTIVITY

- . Ethernet 10/100 Mbits
- . USB host
- . USB device

SENSORS

- . 3DOF accelerometer
- . 2DOF gyroscope
- . humidity and temperature

ON-BOARD MEMORY

- . 256 Mbit SRAM
- . 512 Mbit QSPI FLASH
- . Micro-SD slot (bottom side)

WIRELESS NETWORKING

- . Wi-Fi b/g/n (Atmel WINC1500)
- . BLE 4.1/4.2 (SiLabs MGM111)
- . Thread/ZigBee (SiLabs MGM111)
- . NFC (NXP NT3H1201)

EXPANSIONS

- . Arduino connector
- . 24bit LCD interface, with resistive touch controller
- . external capacitive touch connector

Consumer IoT solutions

Why you should connect your products to the internet?

- 1 Engage your customers with new services
- 2 Save resources and stay competitive
- 3 Collect market data to optimize products
- 4 Imagine innovative product lines

RELOC provides customers with tailored end-to-end IoT solutions, starting from connected embedded devices to scalable cloud storage and services, exploiting reliable communications and deploying cross-platform mobile applications.

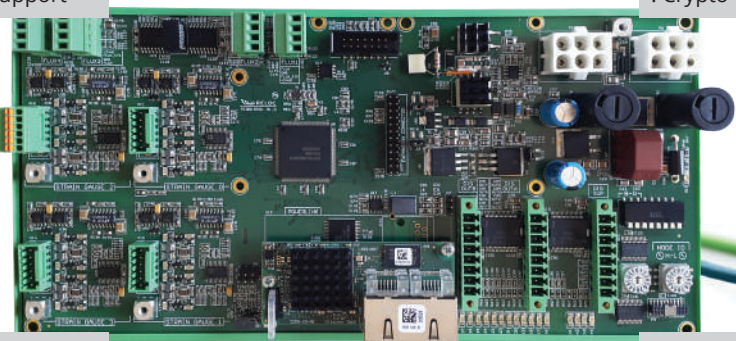


INDUSTRY 4.0

Smart factory solutions

Enter the fourth industrial revolution adopting advanced machine-to-machine solutions: high-performance real-time controllers joined with standard industrial communication protocols.

RELOC designs reliable industrial electronics, extending classical local control with secure remote services in order to support machine monitoring and device responsive failure and error analysis.



RENEAS RX PLATFORM

- . 100 MHz RX CPU core
- . Up to 2 MB Flash
- . Up to 256 kB SRAM

FUTURE PROOF

- . Expandible via castellated board
- . Remote update support

RELIABLE OPERATIONS

- . Redundant power-supply
- . Protected 5+24V supply
- . Crypto-bootloader

FLEXIBLE INPUTS

- . 4x 24-bit SAR ADC
- . 4x pulse count inputs

INDUSTRIAL PROTOCOLS

- . Ethernet real-time M2M
- . Powerlink - EtherCAT
- . CAN-Open support

FLEXIBLE OUTPUTS

- . 12x high-current outputs
- . Flexible real-time control loop