	Document ARROW ARIS – BSP Installation Guide	20/07/2018
---	---	------------

# ARROW ARIS

## BSP Installation Guide

## Revisions

REVISION	DATE	DESCRIPTION	STATUS	AUTHOR	REVISER
1.0	24/03/2017	Document created.	release	C.Tagliaferri	A. Ricci
1.1	26/04/2017	Updated ARIS7 BSP to version 1.2.0 update3	release	C.Tagliaferri	
1.2	12/09/2017	Updated ARIS7 BSP to version 1.3.0	release	C.Tagliaferri	A. Ricci
1.3	04/12/2017	Updated ARIS7 BSP to version 1.3.2	release	C.Tagliaferri	A. Ricci
1.4	06/02/2018	Updated ARIS7 BSP to version 1.3.3	release	C.Tagliaferri	A. Ricci
1.5	18/04/2018	Updated ARIS7 BSP to version 1.4.0	release	C.Tagliaferri	A. Ricci
1.6	20/07/2018	Updated ARIS7 BSP to version 1.5.0	release	C.Tagliaferri	

## Disclaimer

All rights strictly reserved. Reproduction or issue to third parties in any form is not permitted without written authorization from RELOC s.r.l.

<b>RELOC s.r.l.</b> HEADQUARTERS Via Borsari, 23/A 43126 – Parma (Italy)	info@reloc.it – <a href="http://www.reloc.it">www.reloc.it</a> Land +39-0521-1913460 Fax +39-0521-1913461
--	---



## 1. Installation Guide

- Close e2Studio, if open.
- Copy the “.pack” file into the folder

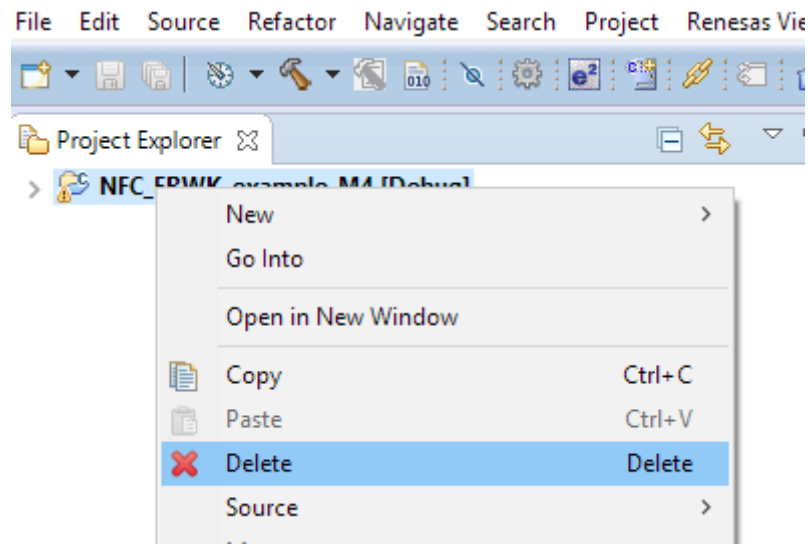
`<e2studio_install_dir>\internal\projectgen\arm\Packs`

overwrite potential previous versions.

## 2. Migration procedure of the projects

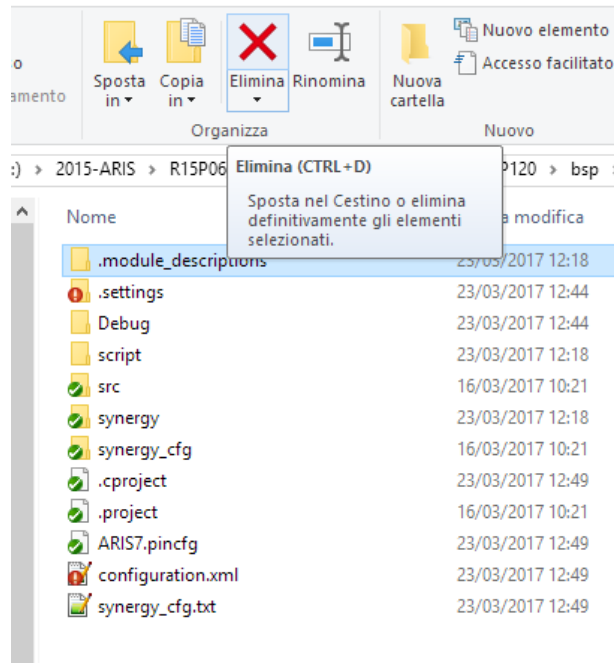
Representative steps of migration procedure are reported below. Images could be different, depending on installed and new pack version(s).

- Open e2Studio and create a new workspace or simply remove project from the previous workspace.

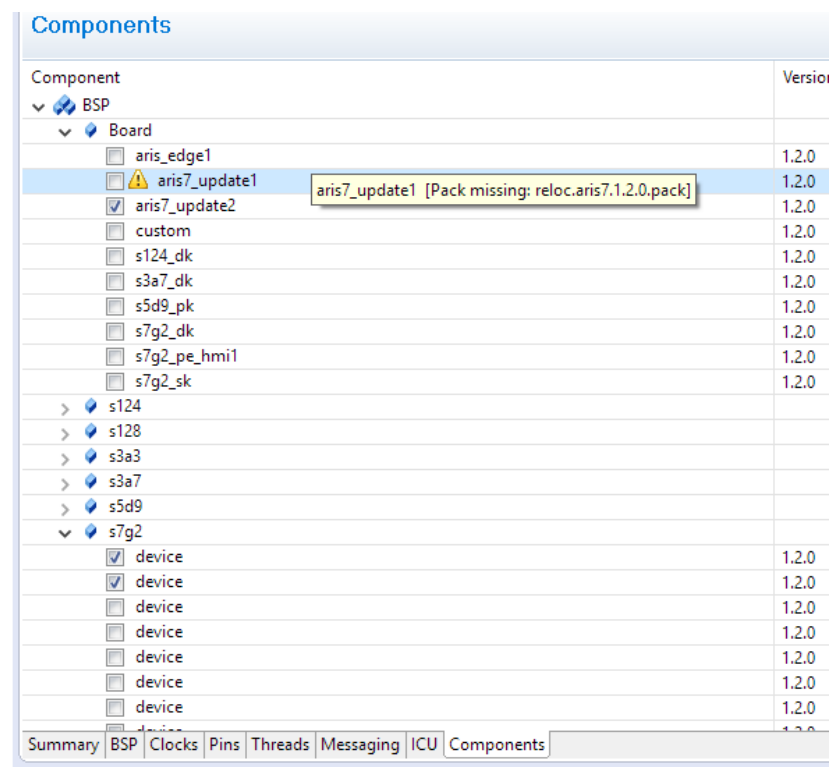


Make sure to **NOT** flag the “Delete project on disk (cannot be undone)” option.

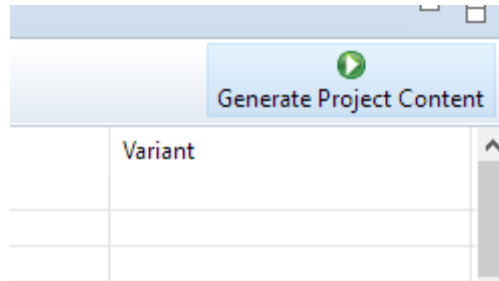
- Delete the “.module\_descriptions” folder in the root directory of the project.



- Import again the project into the e2studio workspace
- Open the “configuration.xml”, select the “Components” tab and change the flagged version of the BSP to the new one, in the example image from “aris7\_update1” to “aris7\_update2”.



- Generate the project content:



- Save and close the “configuration.xml”. Reopen it and no more warning messages should appear.

Components	
Component	Version
▼ Board	
<input type="checkbox"/> aris_edge1	1.2.0
<input checked="" type="checkbox"/> aris7_update2	1.2.0
<input type="checkbox"/> custom	1.2.0
<input type="checkbox"/> s124_dk	1.2.0
<input type="checkbox"/> s3a7_dk	1.2.0
<input type="checkbox"/> s5d9_pk	1.2.0
<input type="checkbox"/> s7g2_dk	1.2.0
<input type="checkbox"/> s7g2_pe_hmi1	1.2.0
<input type="checkbox"/> s7g2_sk	1.2.0
> s124	
> s128	
> s3a3	
> s3a7	

### 3. BSP Change log

Version	Release Date	Modifications
1.5.0	2018-07-20	<ul style="list-style-type: none"> <li>Added defines to enable multi-line page program of the QSPI.</li> </ul>
1.4.0	2018-04-18	<ul style="list-style-type: none"> <li>Changed BSP files version to 1.4.0.</li> </ul>
1.3.3	2018-02-06	<ul style="list-style-type: none"> <li>Changed BSP files version to 1.3.3.</li> </ul>
1.3.2	2017-12-04	<ul style="list-style-type: none"> <li>Changed BSP files version to 1.3.2.</li> <li>Aligned QSPI size read procedure to the new standard.</li> </ul>
1.3.0	2017-09-12	<ul style="list-style-type: none"> <li>Changed BSP files version to 1.3.0.</li> </ul>
1.2.0 update3	2017-04-26	<ul style="list-style-type: none"> <li>Fix in the QSPI size read procedure.</li> <li>Uppercase in first letter of vendor and board name.</li> </ul>
1.2.0 update2	2017-03-23	<ul style="list-style-type: none"> <li>Pin configuration file set as template so that user will be able to modify it.</li> <li>Changed BSP files version to 1.2.0.</li> </ul>
1.2.0 update1	2017-03-20	<ul style="list-style-type: none"> <li>Added missing functions' declaration used by the new QSPI driver the SSP 1.2.0.</li> </ul>
1.2.0	2017-03-16	<ul style="list-style-type: none"> <li>Initial version for SSP 1.2.0 GOLD.</li> </ul>