


|   |  |            |
|---|--|------------|
|  | Document<br>ARIS7 BSP Installation Guide | 26/04/2017 |
|---|--|------------|

# ARIS7 BSP Installation Guide

ARIS7 Board

## Revisions

| REVISION | DATE       | DESCRIPTION                                | STATUS  | AUTHOR        | REVISER  |
|----------|------------|--|---------|---------------|----------|
| 1.0      | 24/03/2017 | Document created.                          | release | C.Tagliaferri | A. Ricci |
| 1.1      | 26/04/2017 | Updated ARIS7 BSP to version 1.2.0 update3 | release | C.Tagliaferri |          |
|          |            |  |         |               |          |
|          |            |  |         |               |          |
|          |            |  |         |               |          |
|          |            |  |         |               |          |
|          |            |  |         |               |          |
|          |            |  |         |               |          |
|          |            |  |         |               |          |
|          |            |  |         |               |          |

## Disclaimer

All rights strictly reserved. Reproduction or issue to third parties in any form is not permitted without written authorization from RELOC s.r.l.

**RELOC s.r.l.**

HEADQUARTERS

Via Borsari, 23/A 43126 – Parma (Italy)

info@reloc.it – [www.reloc.it](http://www.reloc.it)

Land +39-0521-1913460

Fax +39-0521-1913461

## 1. Installation Guide

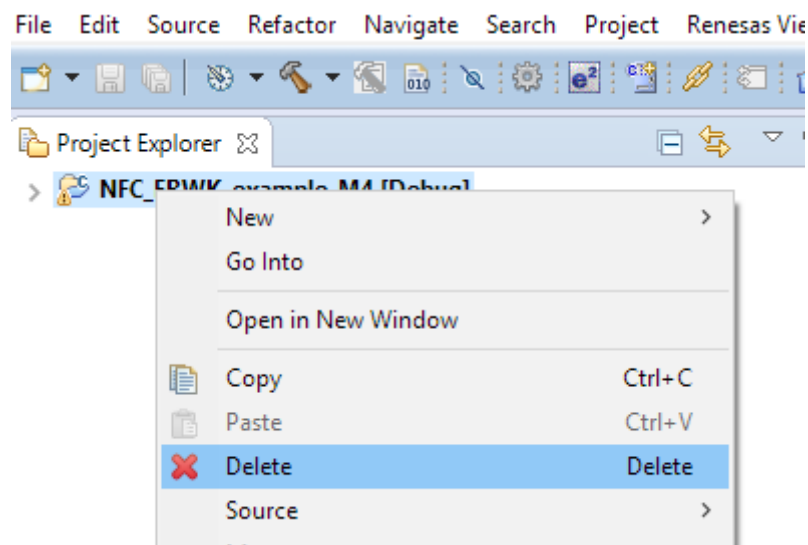
- Close e2Studio, if open.
- Copy the “.pack” file into the folder

`<e2studio_install_dir>\internal\projectgen\arm\Packs`

overwrite potential previous versions.

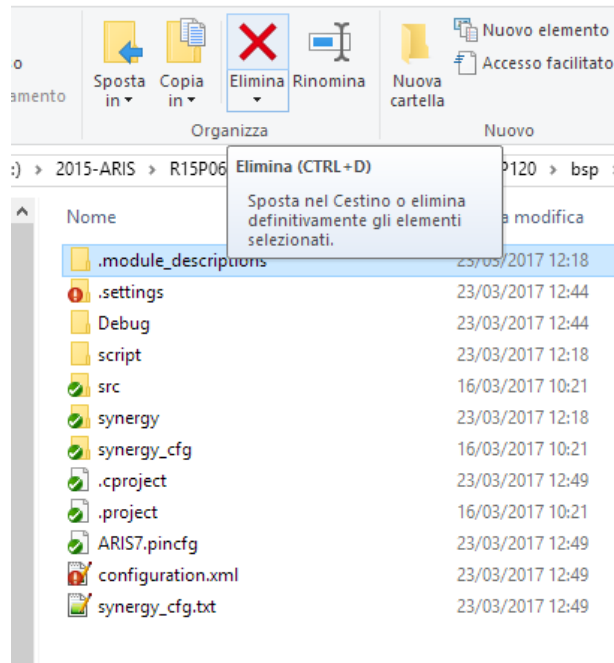
## 2. Migration procedure of the projects

- Open e2Studio and create a new workspace or simply remove project from the previous workspace.

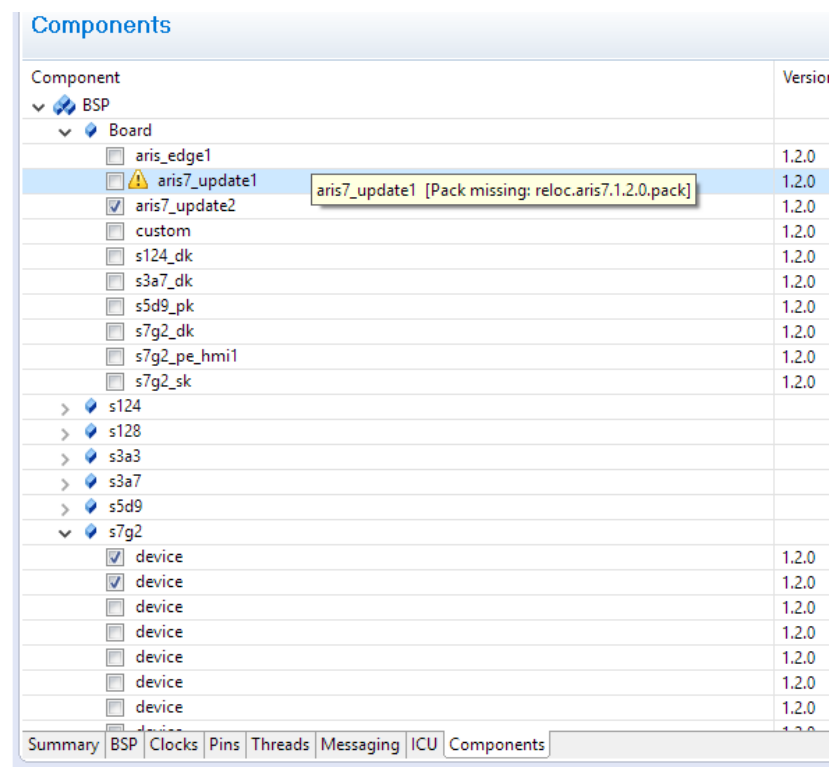


Make sure to **NOT** flag the “Delete project on disk (cannot be undone)” option.

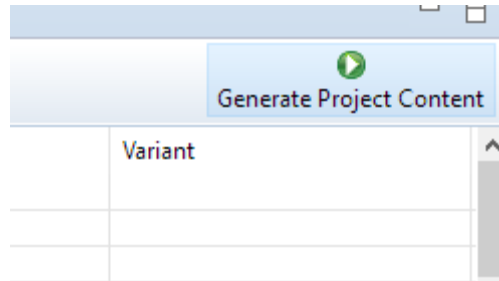
- Delete the “.module\_descriptions” folder in the root directory of the project.



- Import again the project into the e2studio workspace
- Open the “configuration.xml”, select the “Components” tab and change the flagged version of the BSP to the new one, in the example image from “aris7\_update1” to “aris7\_update2”.



- Generate the project content:



- Save and close the “configuration.xml”. Reopen it and no more warning messages should appear.

| Components  |         |
|---|---------|
| Component   | Version |
| ▼ Board   |         |
| <input type="checkbox"/> aris_edge1               | 1.2.0   |
| <input checked="" type="checkbox"/> aris7_update2 | 1.2.0   |
| <input type="checkbox"/> custom                   | 1.2.0   |
| <input type="checkbox"/> s124_dk                  | 1.2.0   |
| <input type="checkbox"/> s3a7_dk                  | 1.2.0   |
| <input type="checkbox"/> s5d9_pk                  | 1.2.0   |
| <input type="checkbox"/> s7g2_dk                  | 1.2.0   |
| <input type="checkbox"/> s7g2_pe_hmi1             | 1.2.0   |
| <input type="checkbox"/> s7g2_sk                  | 1.2.0   |
| > s124  |         |
| > s128  |         |
| > s3a3  |         |
| > s3a7  |         |

### 3. BSP Change log

| Version       | Release Date | Modifications   |
|---------------|--------------|---|
| 1.2.0 update3 | 2017-04-26   | <ul style="list-style-type: none"> <li>Fix in the QSPI size read procedure.</li> <li>Uppercase in first letter of vendor and board name.</li> </ul>                           |
| 1.2.0 update2 | 2017-03-23   | <ul style="list-style-type: none"> <li>Pin configuration file set as template so that user will be able to modify it.</li> <li>Changed BSP files version to 1.2.0.</li> </ul> |
| 1.2.0 update1 | 2017-03-20   | <ul style="list-style-type: none"> <li>Added missing functions' declaration used by the new QSPI driver the SSP 1.2.0.</li> </ul>   |
| 1.2.0         | 2017-03-16   | <ul style="list-style-type: none"> <li>Initial version for SSP 1.2.0 GOLD.</li> </ul>   |