	Document ARROW ARIS – BSP Installation Guide	18/04/2018
---	---	------------

ARROW ARIS

BSP Installation Guide

Revisions

REVISION	DATE	DESCRIPTION	STATUS	AUTHOR	REVISER
1.0	24/03/2017	Document created.	release	C.Tagliaferri	A. Ricci
1.1	26/04/2017	Updated ARIS7 BSP to version 1.2.0 update3	release	C.Tagliaferri	
1.2	12/09/2017	Updated ARIS7 BSP to version 1.3.0	release	C.Tagliaferri	A. Ricci
1.3	04/12/2017	Updated ARIS7 BSP to version 1.3.2	release	C.Tagliaferri	A. Ricci
1.4	06/02/2018	Updated ARIS7 BSP to version 1.3.3	release	C.Tagliaferri	A. Ricci
1.5	18/04/2018	Updated ARIS7 BSP to version 1.4.0	release	C.Tagliaferri	A. Ricci

Disclaimer

All rights strictly reserved. Reproduction or issue to third parties in any form is not permitted without written authorization from RELOC s.r.l.

RELOC s.r.l. HEADQUARTERS Via Borsari, 23/A 43126 – Parma (Italy)	info@reloc.it – www.reloc.it Land +39-0521-1913460 Fax +39-0521-1913461
--	---

1. Installation Guide

- Close e2Studio, if open.
- Copy the “.pack” file into the folder

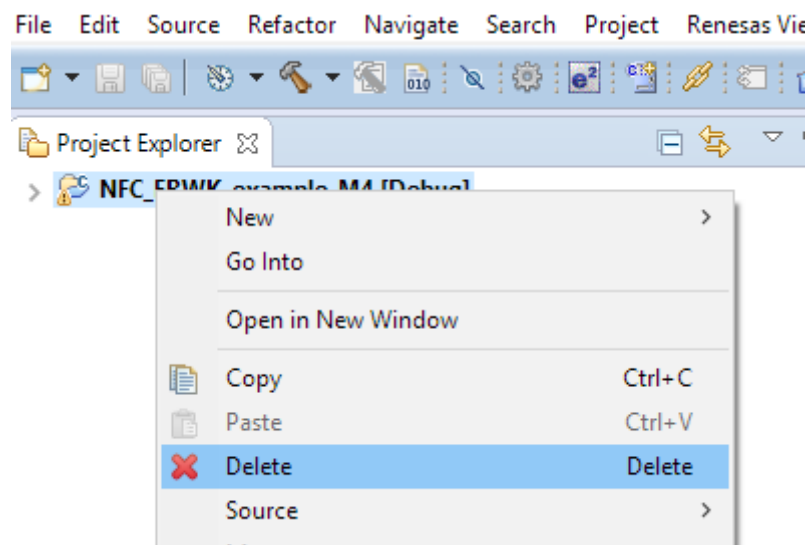
`<e2studio_install_dir>\internal\projectgen\arm\Packs`

overwrite potential previous versions.

2. Migration procedure of the projects

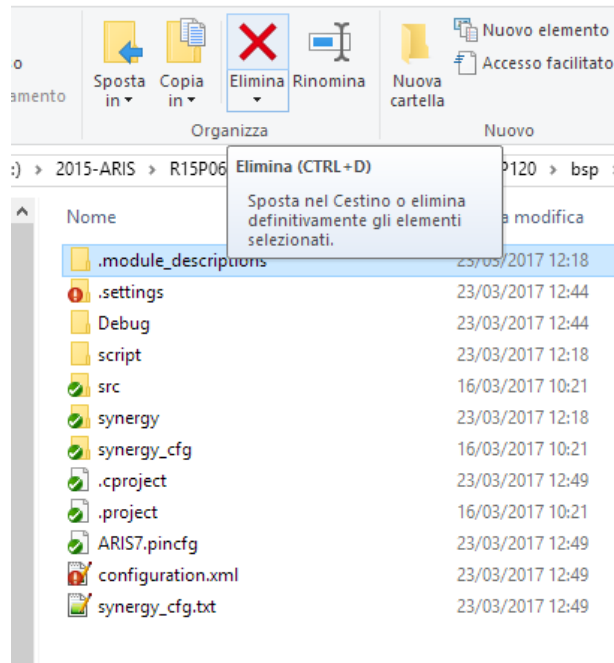
Representative steps of migration procedure are reported below. Images could be different, depending on installed and new pack version(s).

- Open e2Studio and create a new workspace or simply remove project from the previous workspace.

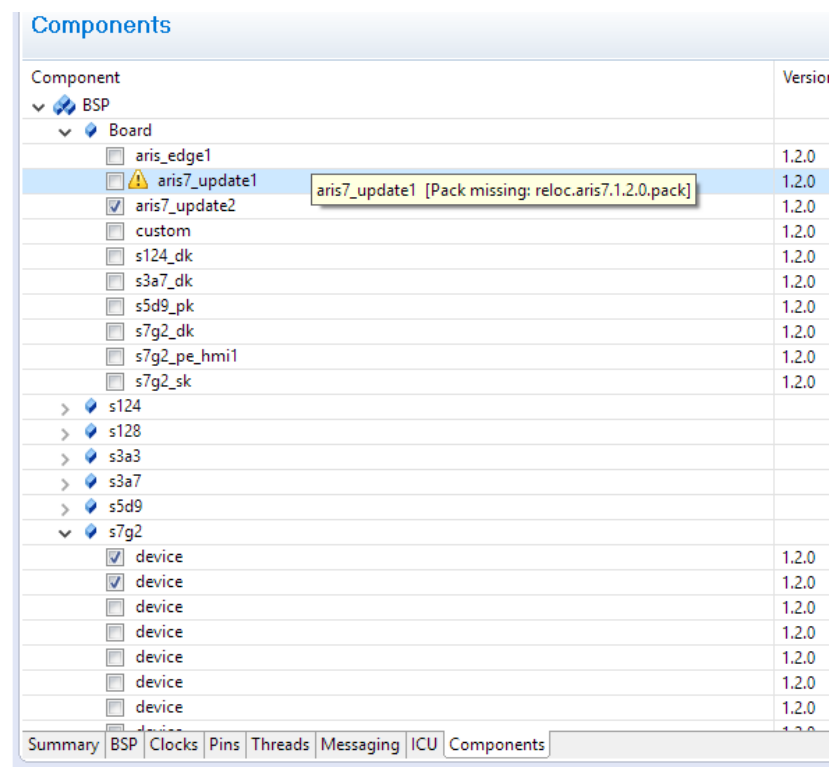


Make sure to **NOT** flag the “Delete project on disk (cannot be undone)” option.

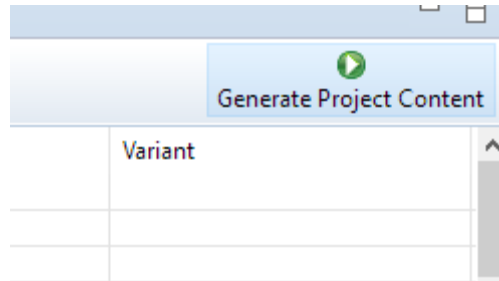
- Delete the “.module_descriptions” folder in the root directory of the project.



- Import again the project into the e2studio workspace
- Open the “configuration.xml”, select the “Components” tab and change the flagged version of the BSP to the new one, in the example image from “aris7_update1” to “aris7_update2”.



- Generate the project content:



- Save and close the “configuration.xml”. Reopen it and no more warning messages should appear.

Components	
Component	Version
▼ Board	
<input type="checkbox"/> aris_edge1	1.2.0
<input checked="" type="checkbox"/> aris7_update2	1.2.0
<input type="checkbox"/> custom	1.2.0
<input type="checkbox"/> s124_dk	1.2.0
<input type="checkbox"/> s3a7_dk	1.2.0
<input type="checkbox"/> s5d9_pk	1.2.0
<input type="checkbox"/> s7g2_dk	1.2.0
<input type="checkbox"/> s7g2_pe_hmi1	1.2.0
<input type="checkbox"/> s7g2_sk	1.2.0
> s124	
> s128	
> s3a3	
> s3a7	

3. BSP Change log

Version	Release Date	Modifications
1.4.0	2018-04-18	<ul style="list-style-type: none"> Changed BSP files version to 1.4.0.
1.3.3	2018-02-06	<ul style="list-style-type: none"> Changed BSP files version to 1.3.3.
1.3.2	2017-12-04	<ul style="list-style-type: none"> Changed BSP files version to 1.3.2. Aligned QSPI size read procedure to the new standard.
1.3.0	2017-09-12	<ul style="list-style-type: none"> Changed BSP files version to 1.3.0.
1.2.0 update3	2017-04-26	<ul style="list-style-type: none"> Fix in the QSPI size read procedure. Uppercase in first letter of vendor and board name.
1.2.0 update2	2017-03-23	<ul style="list-style-type: none"> Pin configuration file set as template so that user will be able to modify it. Changed BSP files version to 1.2.0.
1.2.0 update1	2017-03-20	<ul style="list-style-type: none"> Added missing functions' declaration used by the new QSPI driver the SSP 1.2.0.
1.2.0	2017-03-16	<ul style="list-style-type: none"> Initial version for SSP 1.2.0 GOLD.