

| | | |
|---|---|------------|
|  | Document ARROW ARIS – BSP Installation Guide | 06/02/2018 |
|---|---|------------|

ARROW ARIS

BSP Installation Guide

Revisions

| REVISION | DATE | DESCRIPTION | STATUS | AUTHOR | REVISER |
|----------|------------|--|---------|---------------|----------|
| 1.0 | 24/03/2017 | Document created. | release | C.Tagliaferri | A. Ricci |
| 1.1 | 26/04/2017 | Updated ARIS7 BSP to version 1.2.0 update3 | release | C.Tagliaferri | |
| 1.2 | 12/09/2017 | Updated ARIS7 BSP to version 1.3.0 | release | C.Tagliaferri | A. Ricci |
| 1.3 | 04/12/2017 | Updated ARIS7 BSP to version 1.3.2 | release | C.Tagliaferri | A. Ricci |
| 1.4 | 06/02/2018 | Updated ARIS7 BSP to version 1.3.3 | release | C.Tagliaferri | A. Ricci |
| | | | | | |
| | | | | | |
| | | | | | |
| | | | | | |
| | | | | | |

Disclaimer

All rights strictly reserved. Reproduction or issue to third parties in any form is not permitted without written authorization from RELOC s.r.l.

RELOC s.r.l.

HEADQUARTERS

Via Borsari, 23/A 43126 – Parma (Italy)

info@reloc.it – www.reloc.it

Land +39-0521-1913460

Fax +39-0521-1913461

1. Installation Guide

- Close e2Studio, if open.
- Copy the “.pack” file into the folder

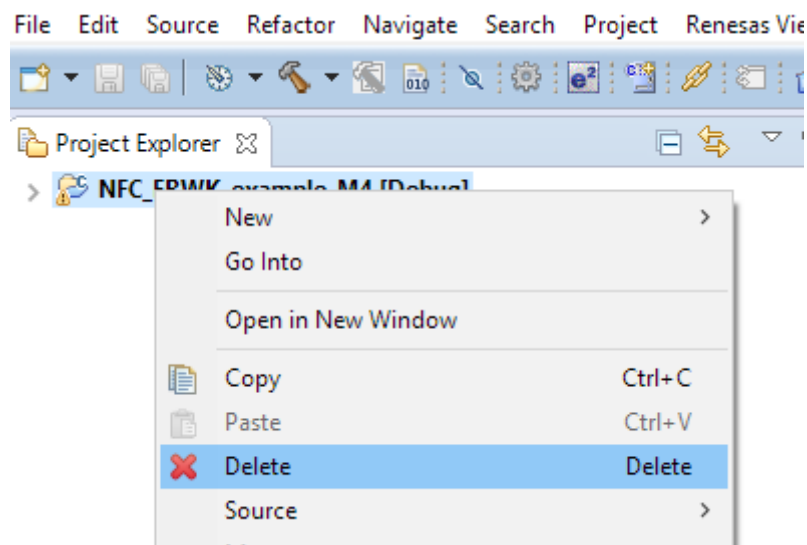
`<e2studio_install_dir>\internal\projectgen\arm\Packs`

overwrite potential previous versions.

2. Migration procedure of the projects

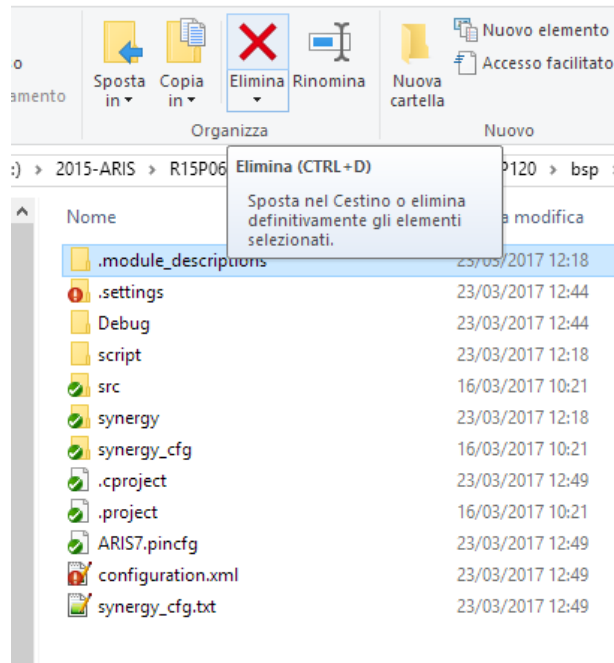
Representative steps of migration procedure are reported below. Images could be different, depending on installed and new pack version(s).

- Open e2Studio and create a new workspace or simply remove project from the previous workspace.

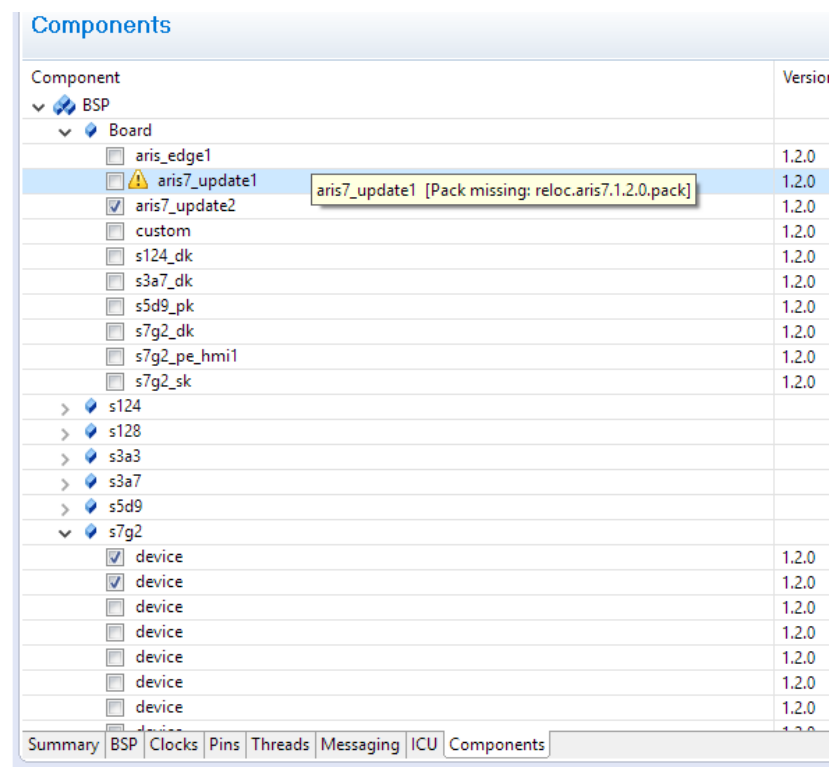


Make sure to **NOT** flag the “Delete project on disk (cannot be undone)” option.

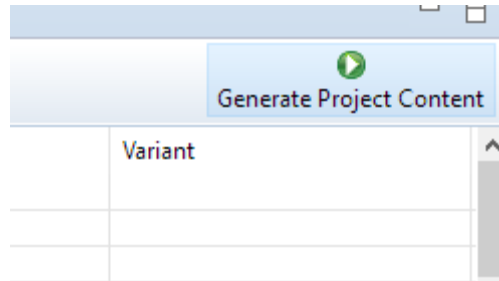
- Delete the “.module_descriptions” folder in the root directory of the project.



- Import again the project into the e2studio workspace
- Open the “configuration.xml”, select the “Components” tab and change the flagged version of the BSP to the new one, in the example image from “aris7_update1” to “aris7_update2”.



- Generate the project content:



- Save and close the “configuration.xml”. Reopen it and no more warning messages should appear.

| Components | |
|---|---------|
| Component | Version |
| ▼ Board | |
| <input type="checkbox"/> aris_edge1 | 1.2.0 |
| <input checked="" type="checkbox"/> aris7_update2 | 1.2.0 |
| <input type="checkbox"/> custom | 1.2.0 |
| <input type="checkbox"/> s124_dk | 1.2.0 |
| <input type="checkbox"/> s3a7_dk | 1.2.0 |
| <input type="checkbox"/> s5d9_pk | 1.2.0 |
| <input type="checkbox"/> s7g2_dk | 1.2.0 |
| <input type="checkbox"/> s7g2_pe_hmi1 | 1.2.0 |
| <input type="checkbox"/> s7g2_sk | 1.2.0 |
| > s124 | |
| > s128 | |
| > s3a3 | |
| > s3a7 | |

3. BSP Change log

| Version | Release Date | Modifications |
|---------------|--------------|---|
| 1.3.3 | 2018-02-06 | <ul style="list-style-type: none"> Changed BSP files version to 1.3.3. |
| 1.3.2 | 2017-12-04 | <ul style="list-style-type: none"> Changed BSP files version to 1.3.2. Aligned QSPI size read procedure to the new standard. |
| 1.3.0 | 2017-09-12 | <ul style="list-style-type: none"> Changed BSP files version to 1.3.0. |
| 1.2.0 update3 | 2017-04-26 | <ul style="list-style-type: none"> Fix in the QSPI size read procedure. Uppercase in first letter of vendor and board name. |
| 1.2.0 update2 | 2017-03-23 | <ul style="list-style-type: none"> Pin configuration file set as template so that user will be able to modify it. Changed BSP files version to 1.2.0. |
| 1.2.0 update1 | 2017-03-20 | <ul style="list-style-type: none"> Added missing functions' declaration used by the new QSPI driver the SSP 1.2.0. |
| 1.2.0 | 2017-03-16 | <ul style="list-style-type: none"> Initial version for SSP 1.2.0 GOLD. |